

Getting to know your easypod®

The only electronic and fully automated device for growth hormone treatment.

Top view



Bottom view

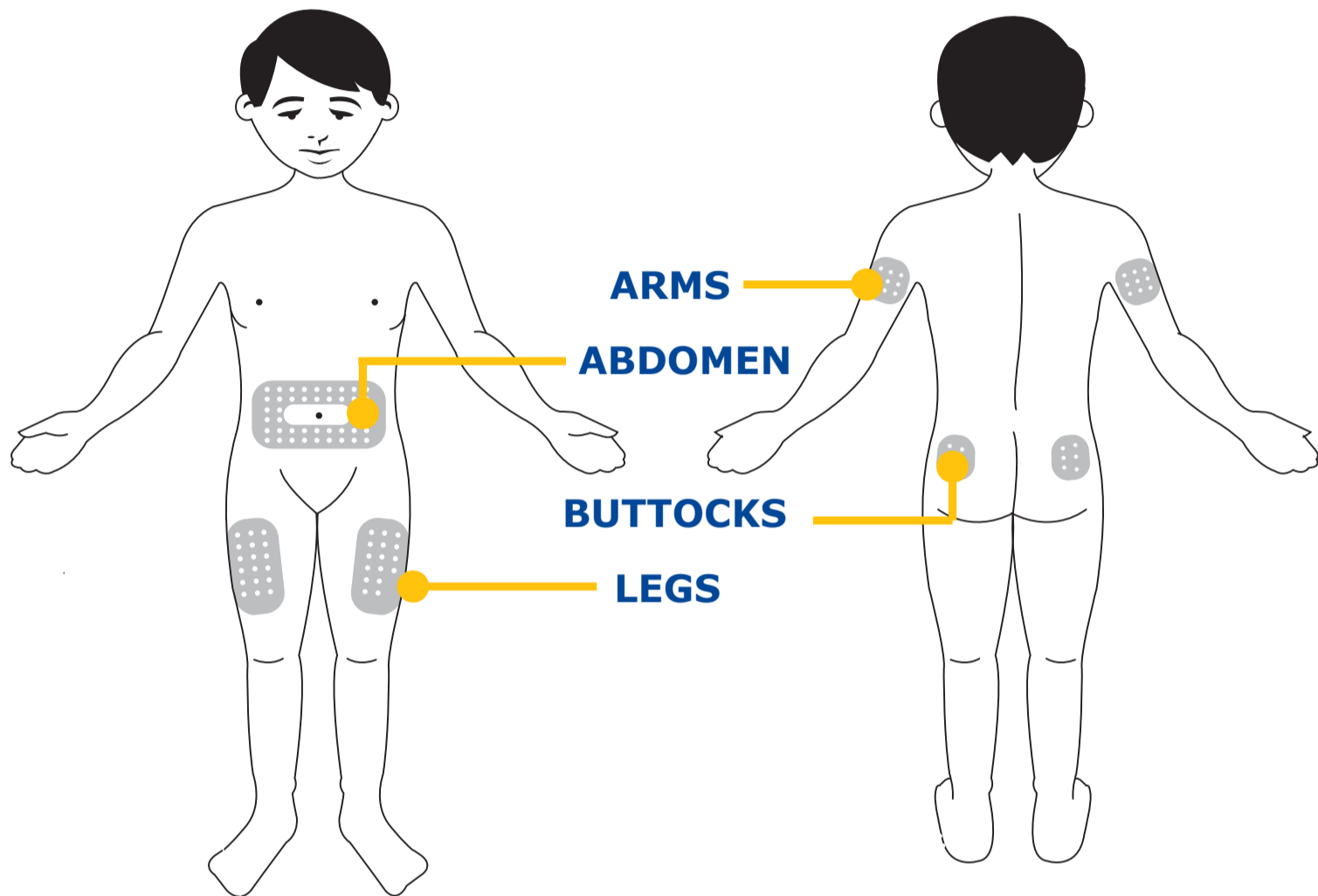


Remember: Always use the wrist strap when handling easypod, and always keep the device upright.

For complete information refer to: **easypod Instructions for Use.**

Preparing for an injection

You should pick a different injection site each day, rotating through arms, legs, abdomen and buttocks.



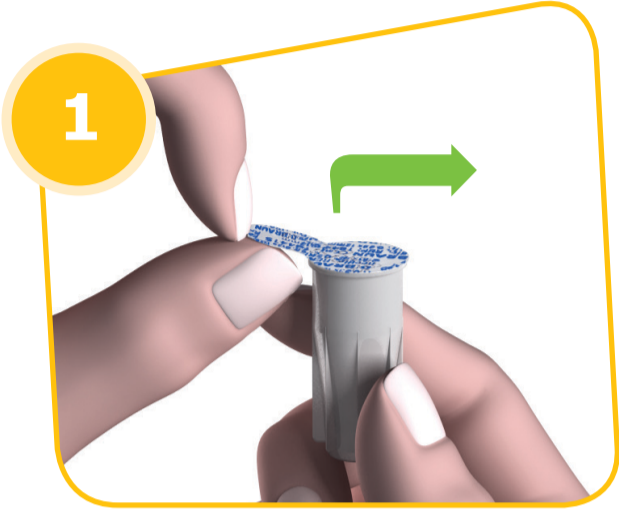
NOTE: You should only use injection sites your healthcare professional has recommended.

Before using easypod, be sure to wash your hands and prepare all the supplies you will need.

Remember: Always use the wrist strap when handling easypod, and always keep the device upright.

How to: Attach a needle

IMPORTANT: Always handle needles carefully to avoid injury. Do not use a needle if its seal is broken.



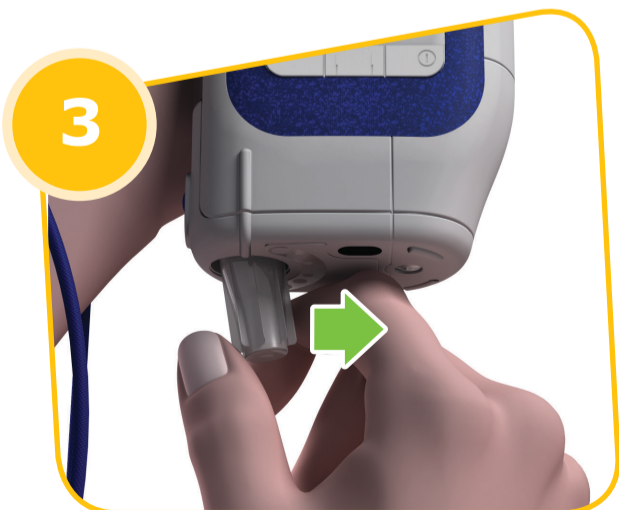
Take a new needle and fully remove the seal.



When the device reads: Insert new needle, push the needle cap straight into the needle cavity until it clicks into place.

The easypod will beep once.

When the needle is successfully attached, the easypod will beep twice.



When the device reads: Remove empty cap, remove the needle cap by pushing it sideways (towards the battery cover) until it detaches and can be easily removed. Do not pull it straight down.

NOTE: Keep the empty needle cap handy for removing the needle after your injection.

How to: Give an injection

IMPORTANT: Prepare the injection site as directed by your healthcare professional before starting.



Remember: Always use the wrist strap when handling easypod.

When the device reads: Place on skin, Press injection button, hold the easypod vertically against the skin.

Do not pinch the skin before, during or after the injection.



When the easypod is properly positioned against the skin, the injection button turns green and the easypod will beep once.

Press the injection button to begin injecting.



During the injection, the green injection button flashes and the device reads: Injection in progress.

Keep the easypod steady and in constant contact with the skin. There is no need to keep pushing the injection button.



When the injection is complete, the green injection button turns off and the easypod will beep twice.



Gently lift the easypod away from the skin.

Press **OK** to confirm the injection has been completed correctly.

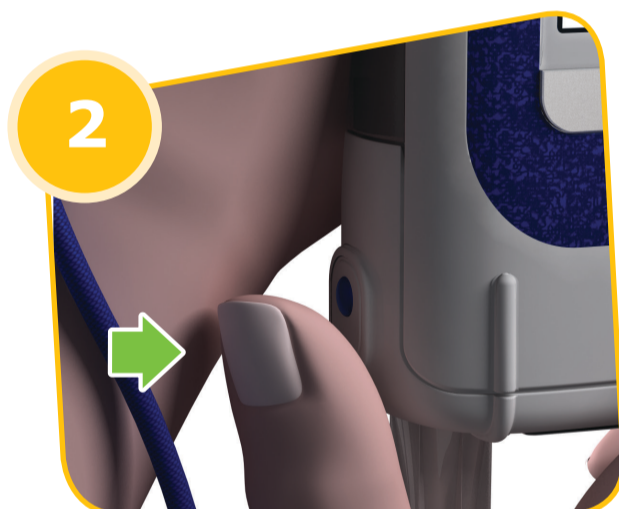
How to: Detach a needle

IMPORTANT: Always handle needles carefully to avoid injury.



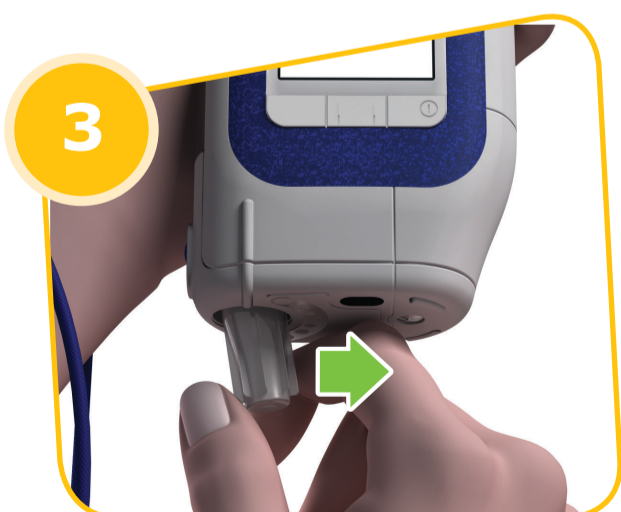
When the device reads: **Place empty cap and remove fingers**, push the needle cap straight into the needle cavity until it clicks into place, then let go.

The easypod will beep once.



Press and hold the needle release button until the easypod beeps twice.

The needle is now detached and inside the needle cap.



When the device reads: **Remove cap**, remove the needle cap by pushing it sideways (towards the battery cover) until it detaches and can be easily removed. Do not pull it straight down.

Dispose of the used needle safely.

Turn off your easypod and return it to storage.

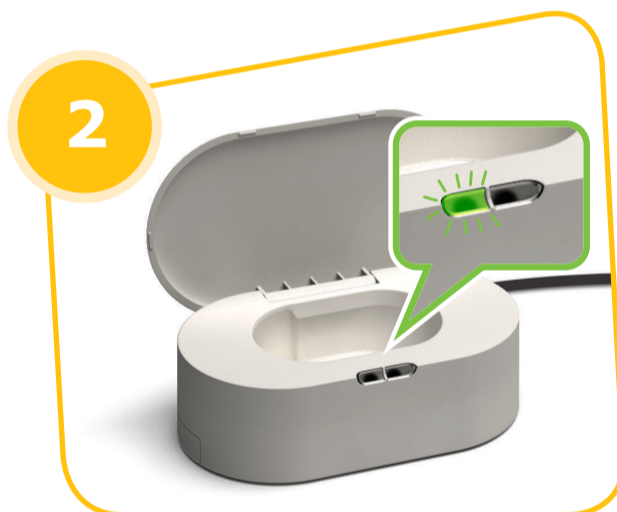
How to: Upload your data

By connecting your easypod to the wireless transmitter, your data will be automatically uploaded to your healthcare professional and your growlink™ app.



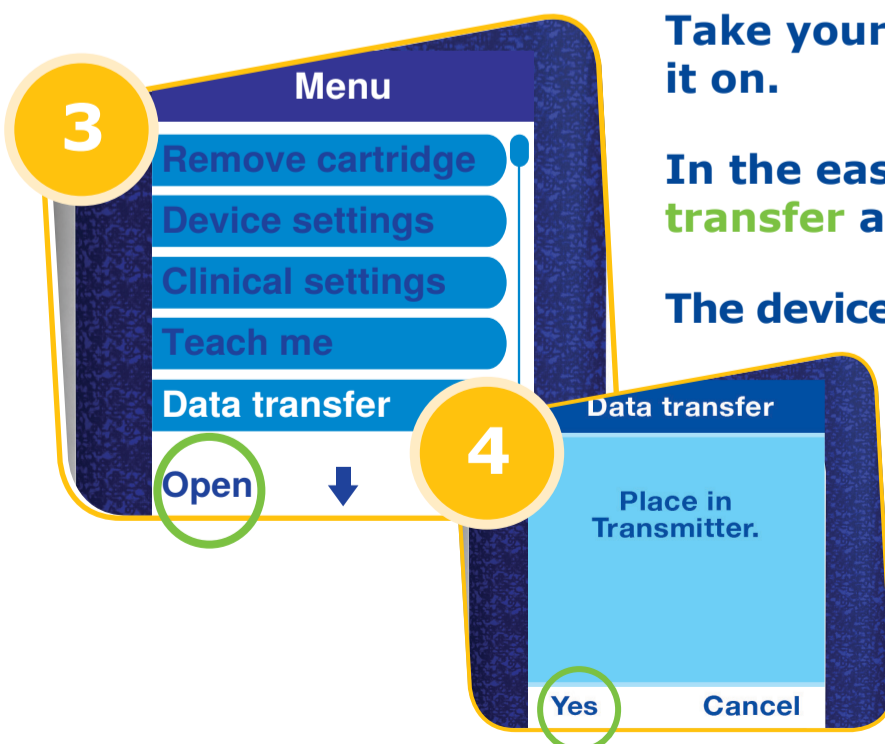
Connect the transmitter to a power supply.

Since the transmitter uses its own mobile network (no wifi required), make sure it is in an area with a strong mobile signal.



Open the transmitter lid and wait for the left light to flash green.

NOTE: If the left light is flashing yellow, you may need to wait up to 2 minutes for the mobile connection.



Take your easypod out of storage and turn it on.

In the easypod main menu, select **Data transfer and press **Open**.**

The device will display: **Place in transmitter.**

Press the **Yes button.**

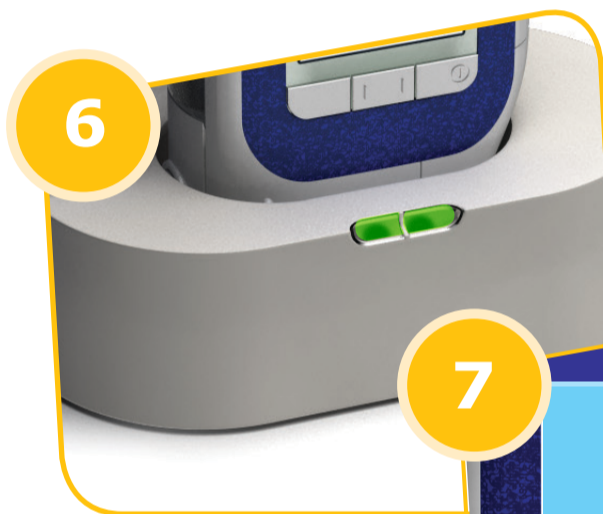


Place the easypod into the transmitter with the screen facing you.

The upload will start automatically, and the left status light will flash green quickly.

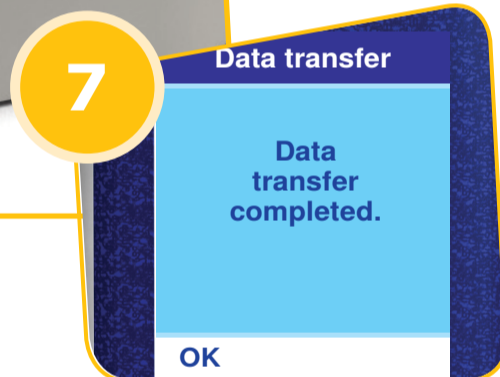


NOTE: Do not touch the easypod or transmitter during upload. If this happens, close the transmitter lid and start over.



Once the upload is complete, both lights will turn green and the device will read: **Data transfer completed.**

Press the **OK** button.



Remove the easypod from the transmitter and close the lid. Turn off your easypod and return it to storage.

Remember: Upload your easypod data every time you change your medication cartridge, and before each clinic visit.

For complete information refer to: **easypod connect transmitter Instructions for Use.**

easypod® is a registered trademark of Merck KGaA. growlink™ is a trademark of Ares Trading S.A. All rights reserved. © 2019 EMD Serono. EMD Serono, a division of EMD Inc., Canada, a business of Merck KGaA, Darmstadt, Germany.

CA/EASY/0519/0006

