

Using easypod[®]: A step-by-step guide

Designed to release families from the worry that
GH therapy will interrupt the rhythm of family life

Getting started

Proper training from a doctor or nurse should be received before using the easypod®

Prepare for injection



1. Gather supplies

Place easypod containing a cartridge (6, 12, or 20 mg), Serofine® needle (29G or 31G), alcohol wipes, and sharps container on a stable surface (e.g., a table) within easy reach.

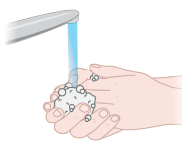
Important! easypod must be used with Saizen cartridges and Serofine needles only.



2. Check device

Before each administration, check the device. Make sure the cartridge and medication correspond to the Saizen Patient Information Leaflet, and there are no signs of damage.

Important! Always check that the cartridge is not cracked, the expiration date has not passed, and the medication is clear, without particles.



3. Wash hands

Wash your hands well with soap and water and dry them with a clean towel.




4. Prepare the site for administration

Select and prepare your child's site as discussed with your doctor or nurse.

5. Turn on device and prepare the dose

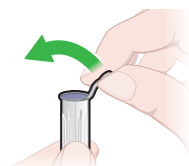


Press the  on-screen injection button to start the administration process. easypod will guide you step by step to administer a dose.

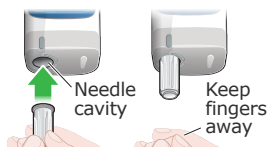
Important! Do not change the injection settings on your easypod until you have discussed it with your doctor or nurse.

Attach needle

6. Insert needle

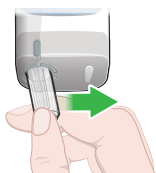


Get a new Serofine needle and check that needle size (gauge "G") on the needle cap's sterility seal is the same as the size on the easypod screen. Pull the flap and fully remove the sterility seal.



When the easypod screen tells you "Insert new needle":

- Push the needle cap containing the needle straight into device until it clicks.
- Let go of the cap while the needle attaches.



7. Remove cap

When the easypod screen tells you to, push the needle cap sideways to remove the cap.

Administer the injection



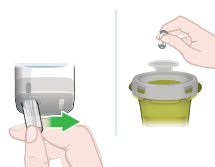
8. Hold device against the skin

- Hold easypod as straight as possible firmly against the administration site, so the skin sensor fully touches your child's skin.
- When easypod is in the correct position and ready to administer, it plays a chime sound, and the injection button light will turn white.



9. Insert medication

- Hold easypod vertically against the site and press the injection button once when it lights up white.
- Lift easypod from your child's skin when it plays a chime sound, and the injection button light stops flashing and turns off.



10. Remove needle

- Push the empty needle cap straight into the device until it clicks. Let go of the cap while the needle detaches.
- Push the needle cap sideways to remove the cap and needle.
- Dispose of the cap with needle in a biohazard (sharps) container.

11. Confirm injection

Press  to confirm the injection.

Important! Always store easypod upright, and make sure there is no needle in the device.



References:

1. easypod® Instructions For Use. Ares Trading S.A. 2023.
2. MAT April 2023 Market Share report. Canadian Drug Store and Hospital Sales Data: IQVIA.

Key benefits of easypod[®]



Easy Administration

- **Modern and Sleek Design:** Easy handling with an intuitive injection button on the front
- **Large touchscreen for better experience**
- **Smart Power:** The battery is rechargeable

Family Friendly

- **Hidden Needle:** Needle is always out of sight – before, during, and after administration
- **Customizable settings** to maximize comfort during use
- **Durable Device:** Built-in shock absorption to address the wear and tear of daily use

Safety

- easypod is a preferred choice of Canadian Pediatric Endocrinologists
- Built-in safety features for worry-free medication administration
- Precise dosing to give you peace of mind
Needle detaches and recaps automatically after use
- On-screen guidance that supports you with every dose

The MOMENTUM patient support program is here to guide you through your treatment journey

Patient & reimbursement support

- 24/7 availability, access to FREE supplies, insurance and financial support
- Option of having in-home training by a Registered Nurse
- Device support
- A financial bridging program to help you start treatment right away

Patient support

easypod.ca

- Patient stories
- Online communities
- Physician and nurse articles
- Online ordering of supplies



momentum

Getting you started. Seeing you through.

 **1-877-724-9361**

 **easypod.ca**

Saizen® and easypod® are registered trademarks of Ares Trading S.A.
All rights reserved. © 2023 EMD Serono.
EMD Serono, A Division of EMD Inc., Canada
A business of Merck KGaA, Darmstadt, Germany
2695 North Sheridan Way, Suite 200, Mississauga, Ontario L5K 2N6 Canada

CA-SAI-00058